

From Research to Policy Action Across Local and International Dimensions: Insights on CREAM, Ecosystem Services, Digitalization

MS.c. Burcu Berk
Dr. Enrique Doblas Miranda

Centre for Ecological Research and Forestry Applications (CREAF) - Catalonia, Spain

Lucca, Italy



CREAF

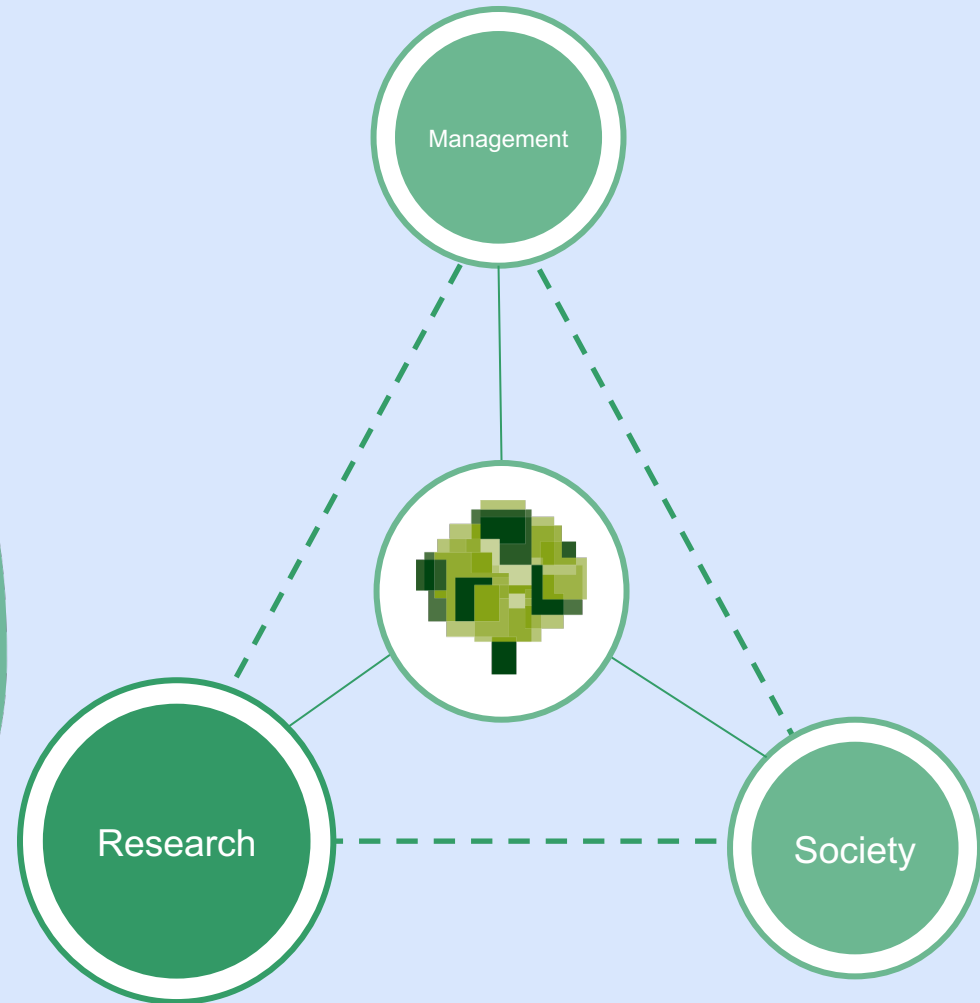


EXCELENCIA
SEVERO
OCHOA

CREAF is a public research center established in 1988.

We generate knowledge to understand nature through research, and we collaborate with society to find informed solutions to environmental challenges at both local and global scales.

Which has held the Severo Ochoa Centre of Excellence recognition since 2019.



Connecting Science, Innovation & Local Policy



The intersection of research and innovation, helping connect ecosystem science to real-world applications.



In CREAM we implement the science application from Catalonia to broader EU contexts.



My work focuses on making ecosystem science useful — through tools, data, and innovation — for those shaping local and regional decisions.



This presentation explores how ecosystem services research and digital tools can support local governance and policy action.

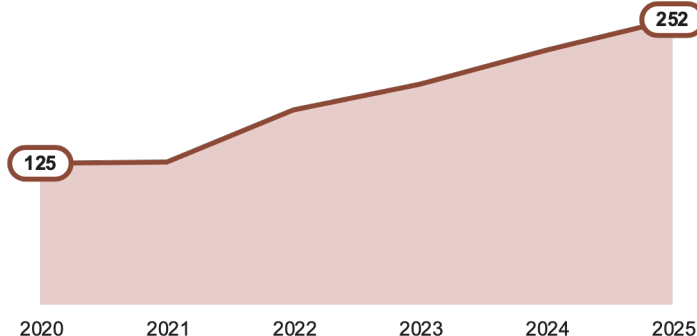
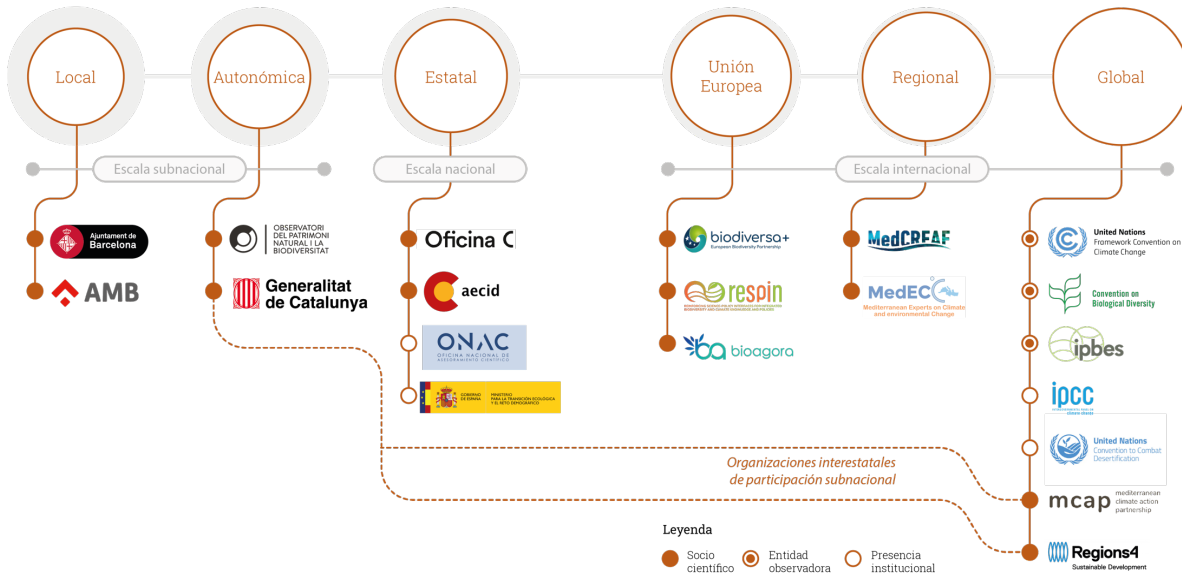
The key role of CREAM to support policies and how it increased its international role and capabilities

Ciencia para las políticas públicas

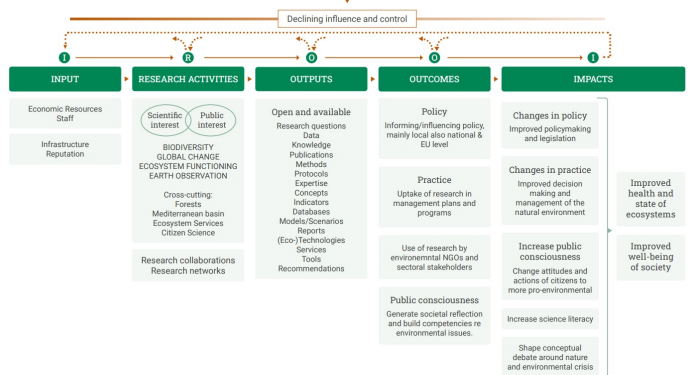
Generación y movilización del conocimiento científico relevante para ayudar a hacer políticas públicas informadas, eficaces y adaptadas a los grandes retos sociales y ambientales

Diplomacia científica

Participación científica en procesos diplomáticos multilaterales, aportando evidencias y asesorando en negociaciones internacionales

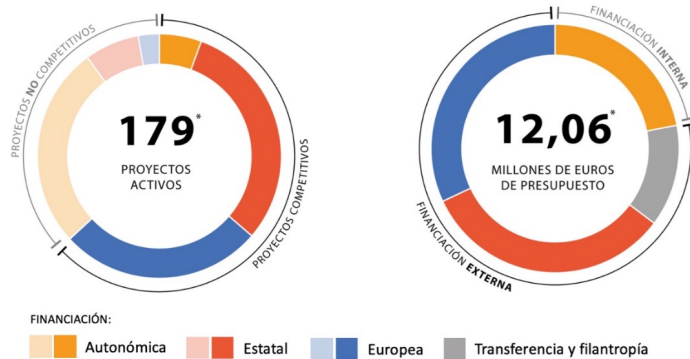


CREAF'S IMPACT FRAMEWORK



Leaders in citizen science: Reaching To Society

We launch projects in which citizen participation is essential.



* Datos de la última memoria publicada (2023)



Ecosystem Services (ESS) - What are they and why they matter?

ESS are the benefits humankind obtains from the workings of the natural world and constitute the natural base for economic prosperity and quality of life.

Why local governments should care about ESS:

- They impact land-use planning, restoration, climate resilience, and rural development
- Helps with planning, green infrastructure, nature-based solutions
- Basis for accessing EU funding or meeting climate/sustainability goals



AlertaForestal – Citizen Monitoring Linked to Forest Ecosystem Services

Help us assess the health of our
forests

Participa

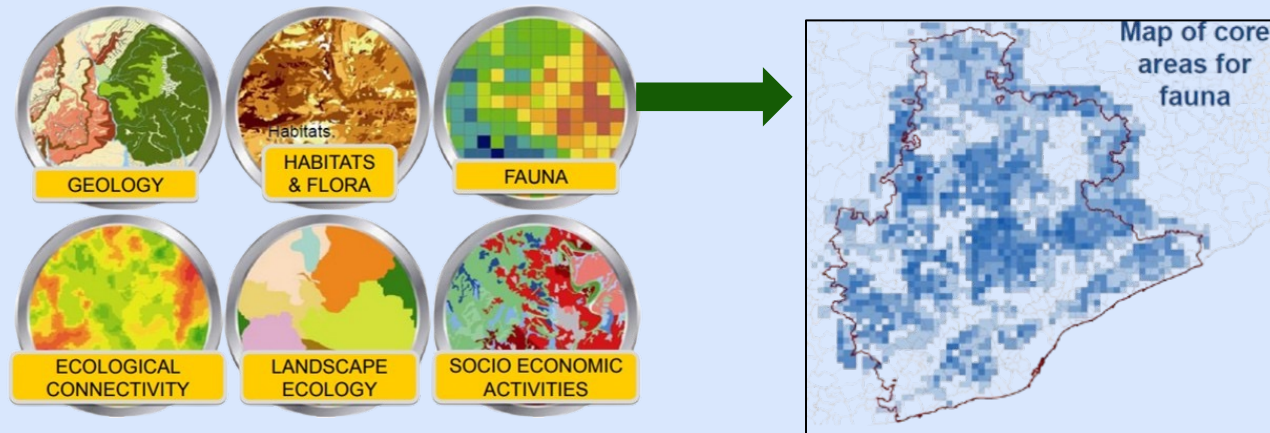
Discover the project

Sitxell Project

Sitxell aimed at studying and evaluating non-urban land, taking into account the different approaches and values, in order to apply in a cross-cutting way in territorial policies.

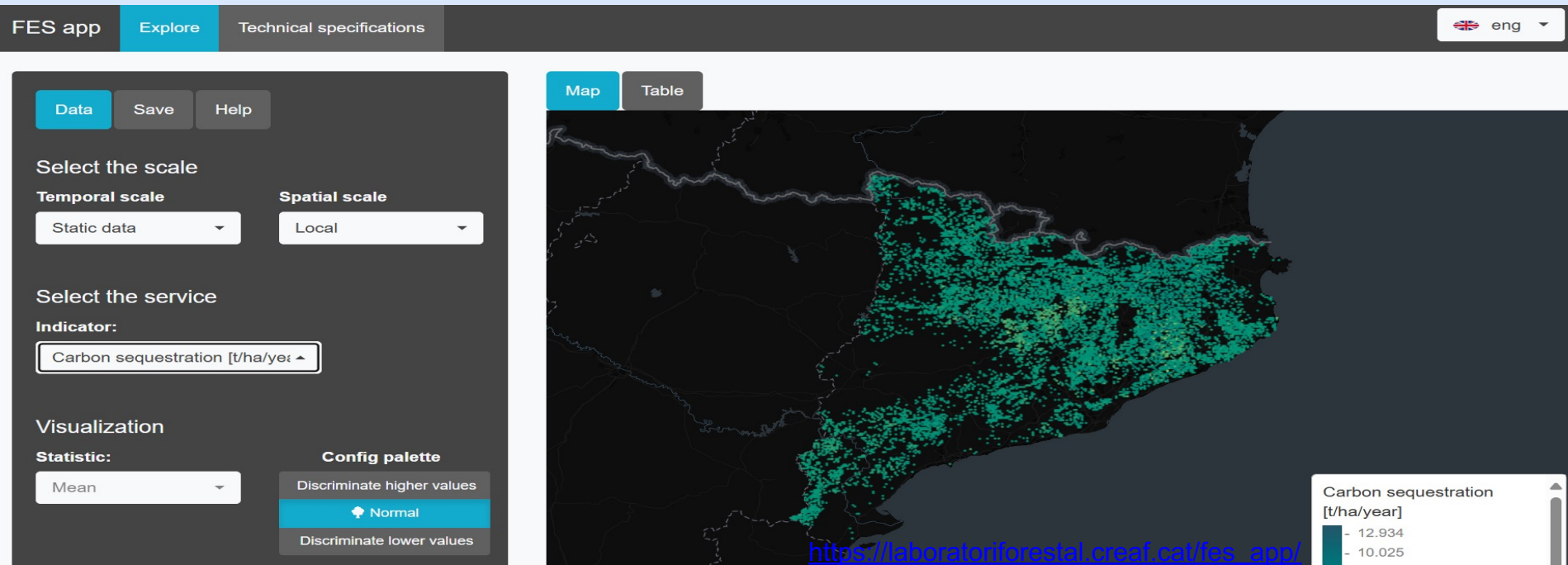
Sitxell aims to show the Cartography of ecological and socioeconomic values of ALL of open areas in the province of Barcelona.

CREAF supports land-use planning in Barcelona region.



Forestry Laboratory Tool

A digital platform by CREAMF that centralizes forest-related data and tools to support informed decision-making on forest management, ecosystem services, and sustainability at local and regional levels.



DigiMedFor Project– Linking Forest Innovation to Landscape Governance

It is a Horizon Europe project building digital tools for Mediterranean forest value chains.

Activities:

- Building digital tools for local decision-makers
- Tracking and transparency tools
- Supporting the forest owners & sustainable forest management decisions

“One goal is to make ecosystem knowledge practical — and usable for local authorities.”



Digital Tools for Local Impact – What You Can Use



CREAF & DigiMedFor Project offers for local authorities, forest owners & policy makers can benefit from digital tools:

- Tools for ESS evaluation - Forest Lab & AI powered ESS Tool
- Forest traceability dashboards
- Nature into land-use plans
- Communicate the value of forests to citizens and stakeholders



AI powered ESS Tool

An AI-powered tool for comparing and analyzing forest ecosystem service (ESS) assessment platforms to support better decision-making and valorization for forest owners, managers, and public/private entities.



Forest Ecosystem Services Analysis Tool

Compare and analyze forest ecosystem service assessment tools for private and public forest owners, forest managers, and public and private entities



English ▾



About



Compare
Selected (0)

🔍 Search tools, services, or descriptions...



Filter by usability level:

Basic

Intermediate

Advanced



Name



#1



ARIES

Tool

advanced level View 11 ecosystem services

Definition

ARIES (ARtificial Intelligence for Environment & Sustainability) is an ecosystem services assessment tool to bridge the gap between scientific research and practical decision-making. By leveraging advanced AI and machine learning technologies, ARIES provides forest owners with tools to assess and manage

#2



CICES

Guidance

intermediate level View 19 ecosystem services

Definition

CICES (Common International Classification of Ecosystem Services) is a standardized framework developed to classify and organize ESS in a consistent and systematic way. Its main goal is to improve the assessment, valuation, and understanding of the services that ecosystems provide, supporting better

#3



ESTIMAP

Guidance

intermediate level View 5 ecosystem services

Definition

ESTIMAP (Ecosystem Services Mapping at European Scale) is a GIS-based framework designed to map and assess ecosystem services (ESS) at the European scale. It consists of a series of spatially explicit models that evaluate different ecosystem services, helping policymakers, planners, and researchers

From Science to Action – Reflections for Policymakers & Authorities

Research and innovation are central to provide valuable elements for evidence-based policy-making R&I can guide and support effective and high-value policies.

1. *Scientific research can guide and support local policy — especially when paired with digital tools*
2. *Local authorities are essential actors in ecosystem service planning: increasing or reducing value is an opportunity and a risk they run with their choices*
3. *Collaboration across research, innovation, and governance is key, also to mobilize and favour cooperation with the private sector, investments and ultimate sustainability.*

Thank you!

Burcu Berk

b.berk@creaf.uab.cat

Enrique Doblas

e.doblas@creaf.uab.cat